

Medical University of South Carolina

Dr. Ray Greenberg

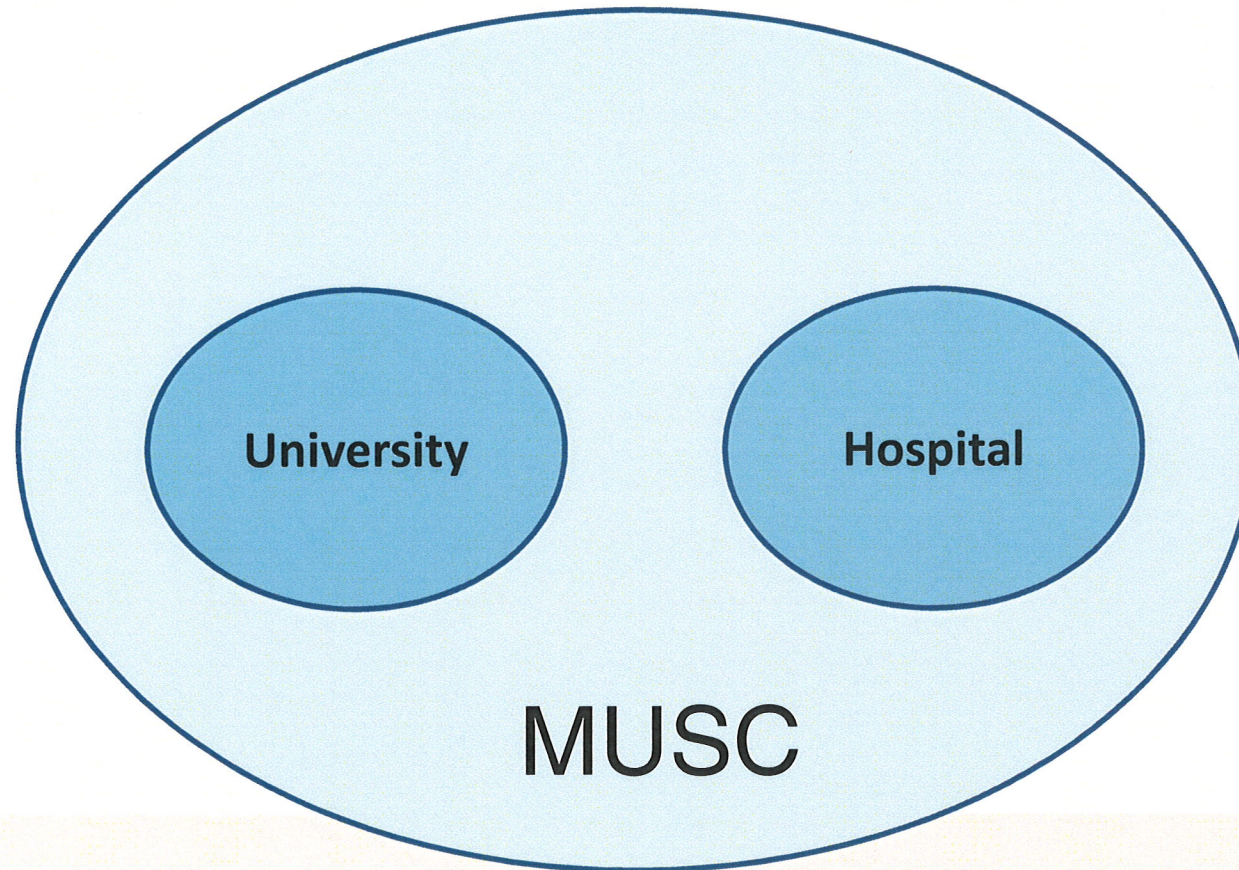
**Presented to: Health and Human Services
Subcommittee of House Ways and Means Committee**

January 30, 2013

Changing What's Possible.

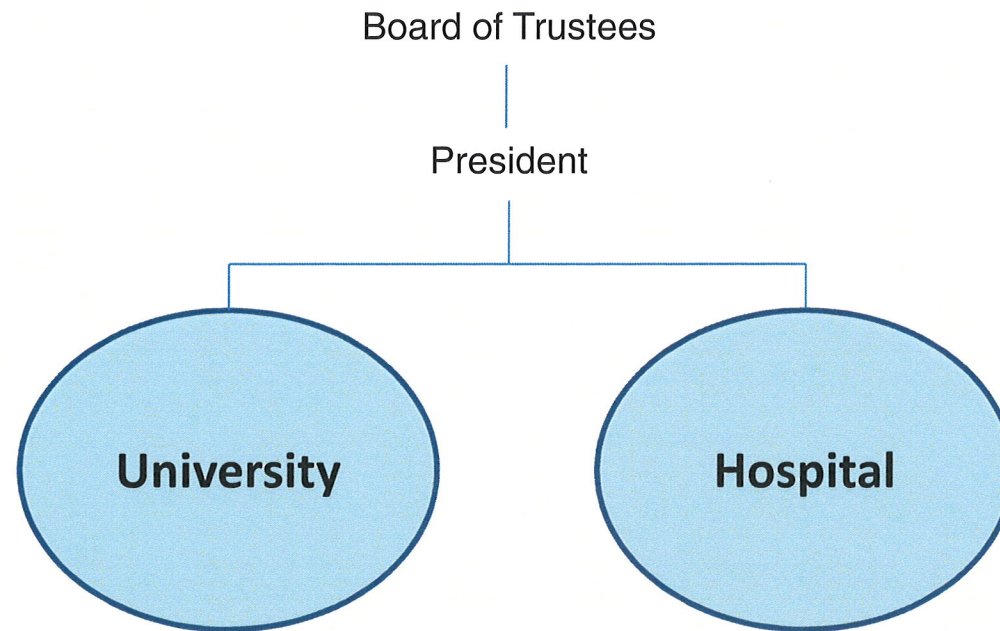


Pre-2001



Changing What's Possible.

Post-2001



MUSC

Changing What's Possible.

Motivation for Creating the Hospital Authority

Market-based systems for:

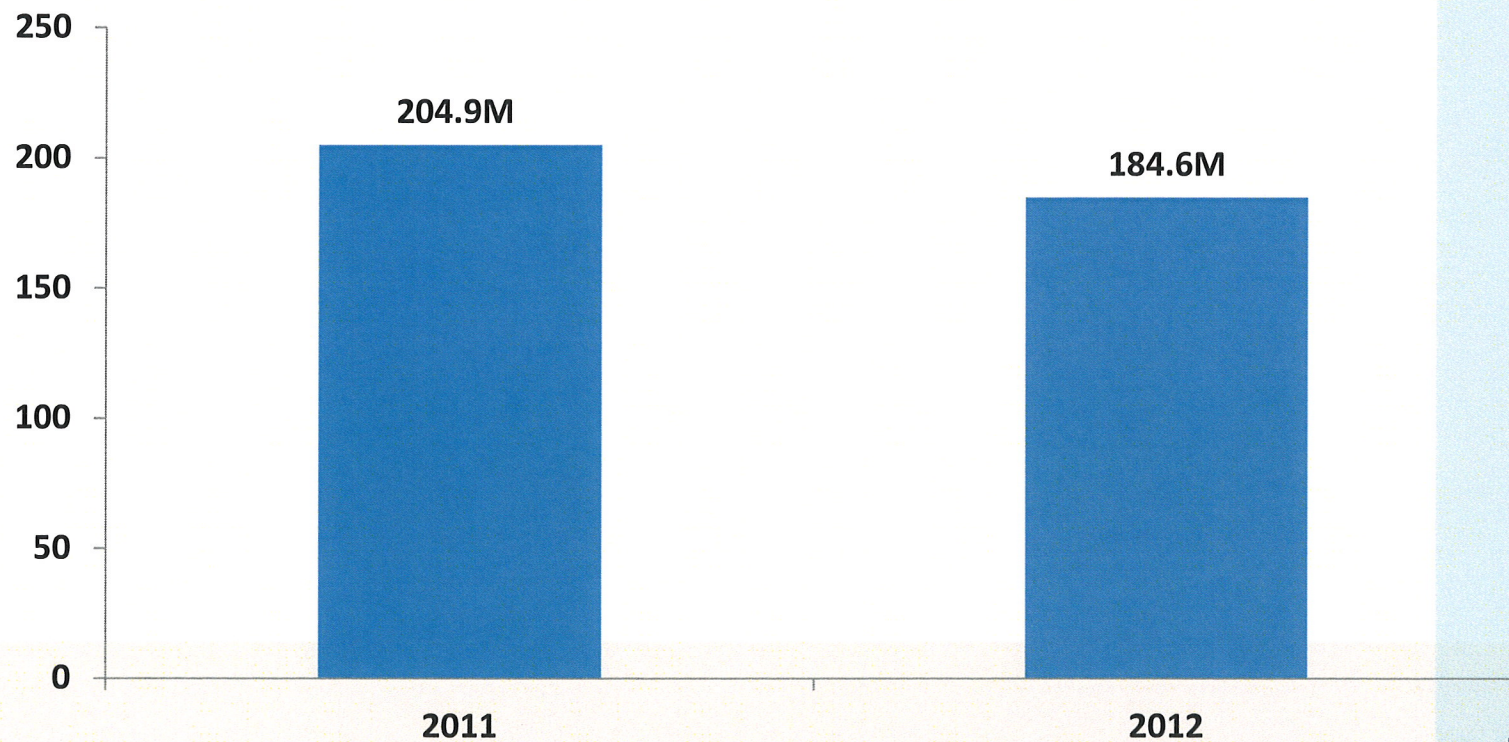
1. Procurement
2. Human Resources

Changing What's Possible.

Largest Medicaid In-patient Provider

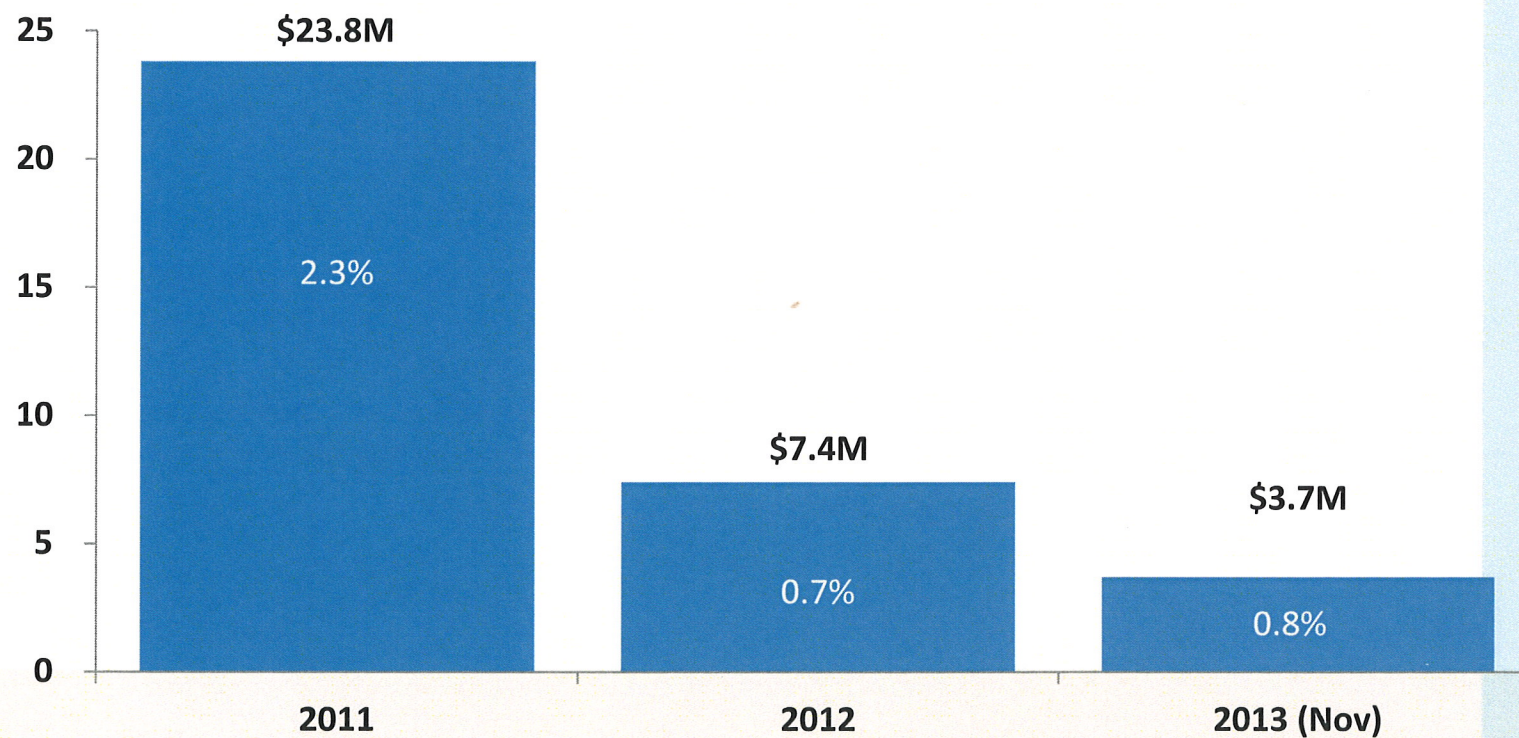
- In FY11, \$175 million of Medicaid payments
- 13,336 Medicaid admissions
- 15% of all Medicaid in-patient payments

Medicaid Payment Reduction



Changing What's Possible.

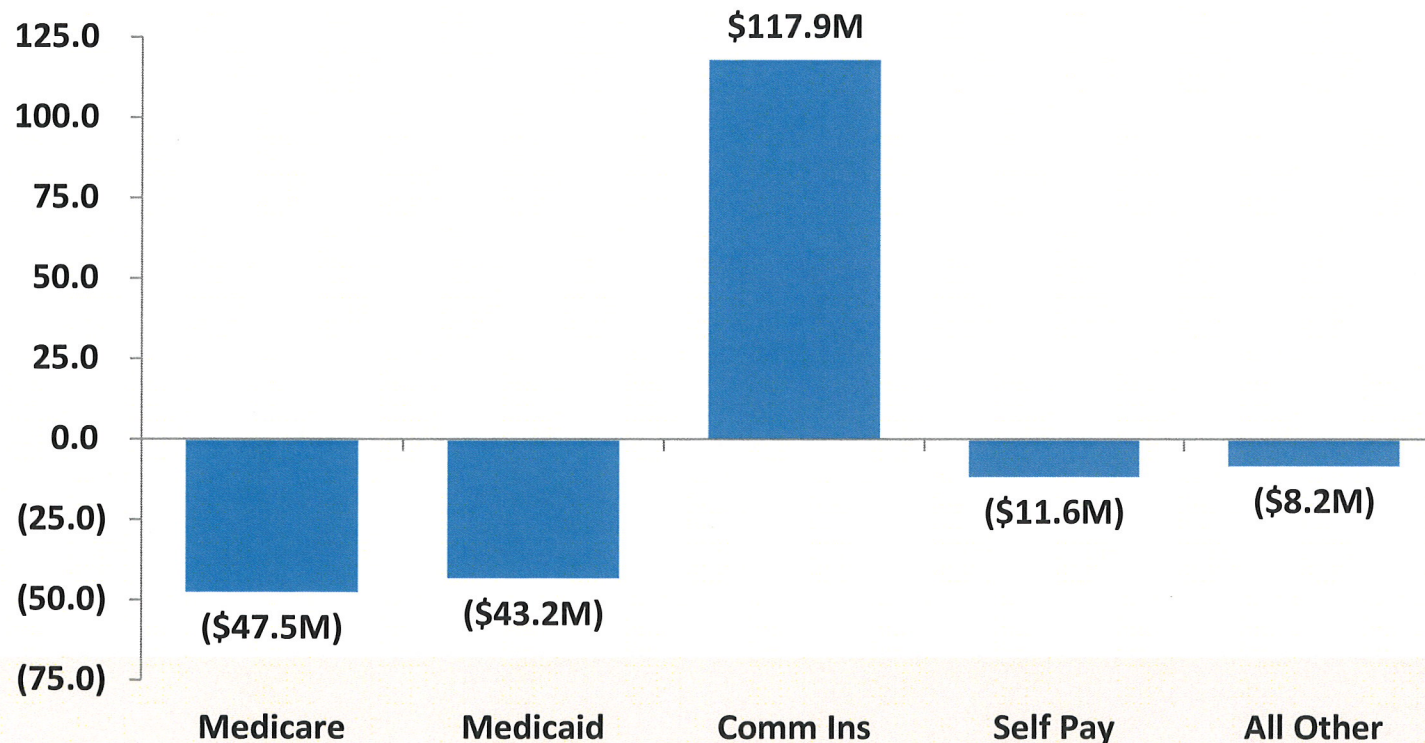
Hospital Net Margin Trend



Changing What's Possible.

Hospital Net Margin by Payer

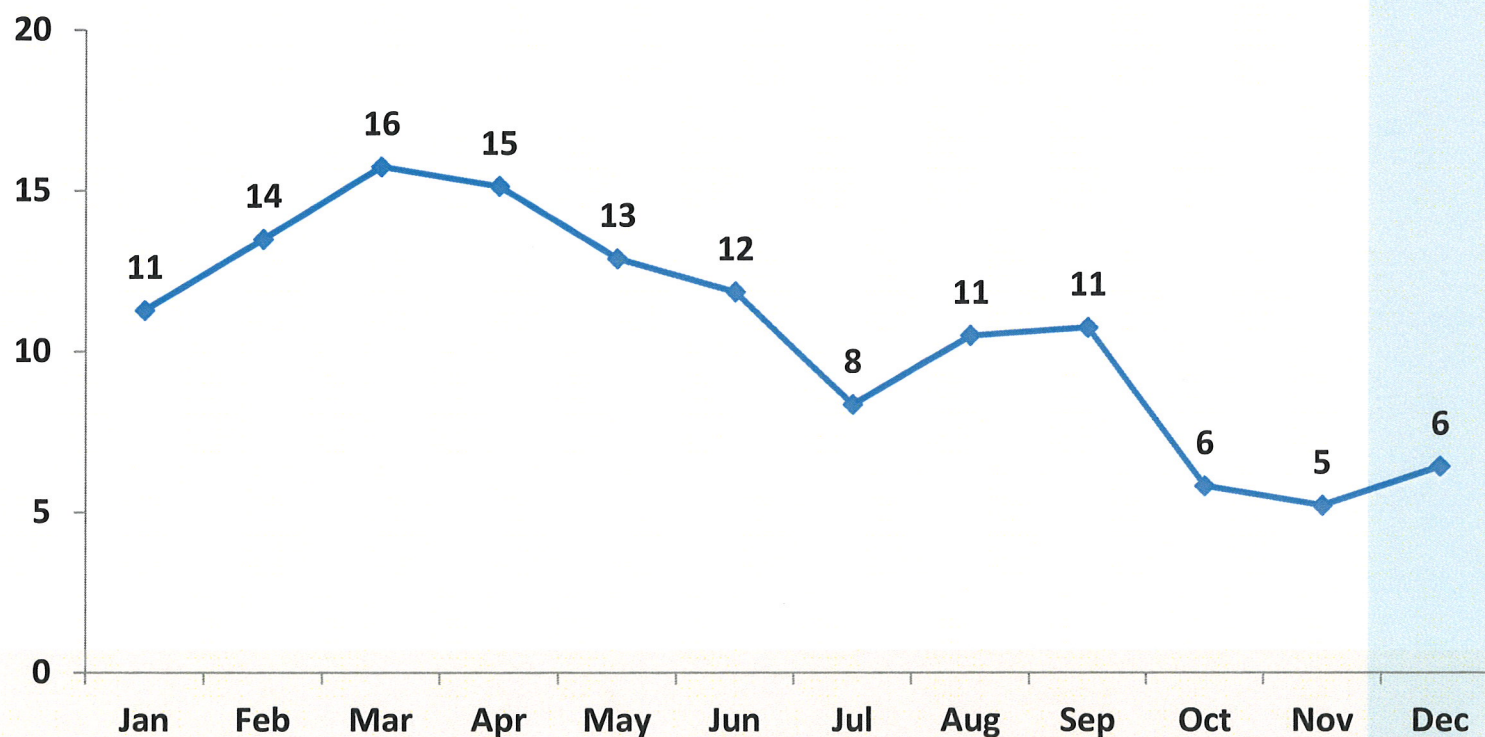
FY 2012



Changing What's Possible.

Days Cash on Hand

Calendar Year 2012



Changing What's Possible.

Best Patient Care



Changing What's Possible.

Best Patient Care

U.S. News Rankings

- Ranked in Top 50 in adult: gastrointestinal disorders, ear/nose/throat disorders, nephrology, and cardiology; and pediatric heart surgery and gastroenterology
- MUSC is ranked first in South Carolina – with 11 specialties recognized as high performing
- Recognized 13 programs: nephrology, gynecology, orthopedics, rheumatology, cancer, cardiology/heart surgery, neurology/neurosurgery, psychiatry, pulmonology, geriatrics, urology

Changing What's Possible.

Patient Care

- Won AAMC Readiness for Reform Health Care Innovation Challenge for Diabetes program
- *Consumer Reports*: Children's Hospital is one of five in US with no central line blood-borne infections
- Designed and implemented health information exchange with all hospitals in Charleston

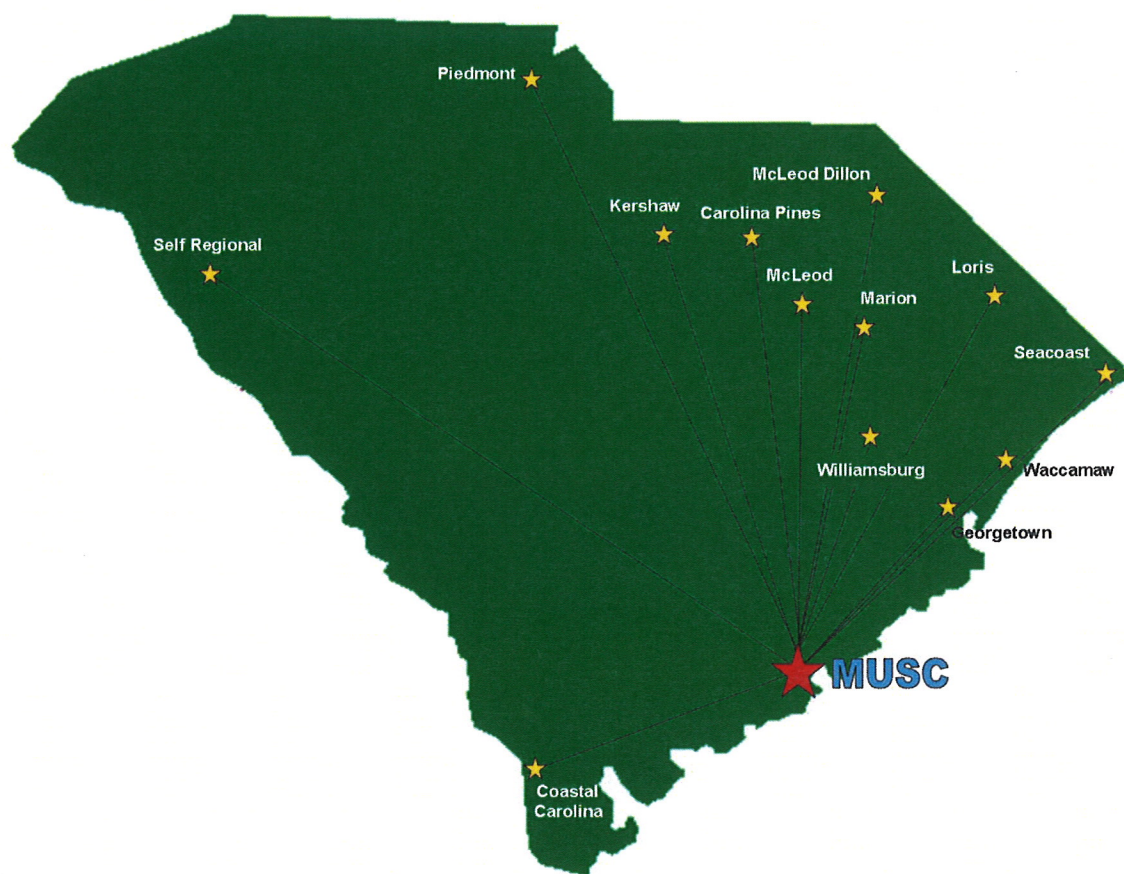
Patient Care

- Avatar International Award for “Exceeding Patient Expectations”
- HealthGrade Outstanding Patient Experience Award
- The Leapfrog Group gave MUSC a grade of "A" in patient safety

Changing What's Possible.

REACH MUSC Tele-Stroke Network

May 2008 – Present



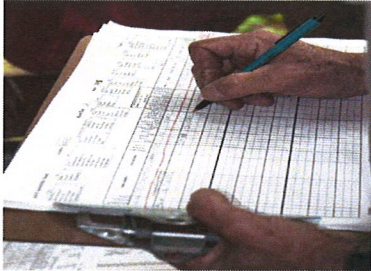
13 Active Spoke Hospitals

2 Sites Pending

- 2,031 Hospital Beds
- 379,875 Emergency Room visits per year

Changing What's Possible.

Results to Date:



- 3033 Consults
- 525 Treated with tPA

	FY 2009*	FY 2010	FY 2011	FY 2012	FY 2013**
Consults	181	373	769	1149	561
Treated with tPA	55	75	139	169	87

* May 2008 (date of inception) -6/2009

** 7/2012-12/2013

Changing What's Possible.

MUSC Children's Hospital

- Built in 1987
- 190,000 sq. ft.
- 186 total beds



Changing What's Possible.

MUSC Children's Hospital

A National Leader in Children's Health

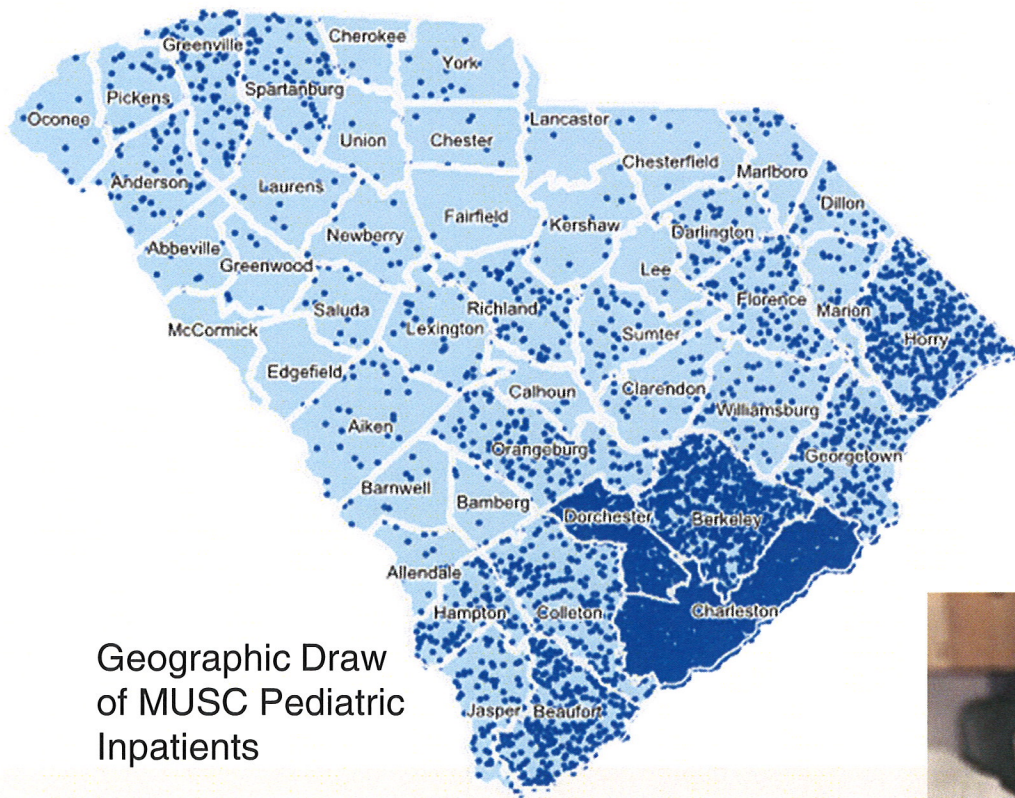
- Top 15 best pediatric heart programs
- Top 10 best pediatric emergency care facilities
- Top 10 best neonatal intensive care units
- Top 28 best children's hospitals
- Top 50 best pediatric gastroenterology programs



Changing What's Possible.

MUSC Children's Hospital

A Resource for South Carolina



Changing What's Possible.



MUSC Children's Hospital

A Resource for South Carolina

203,023

2012 Total Pediatric Outpatient Visits
25% from outside the Tricounty area

Changing What's Possible.

MUSC Children's Hospital

A Resource for South Carolina

6,523

2012 Total Pediatric Inpatient Visits
40% from outside the Tricounty area

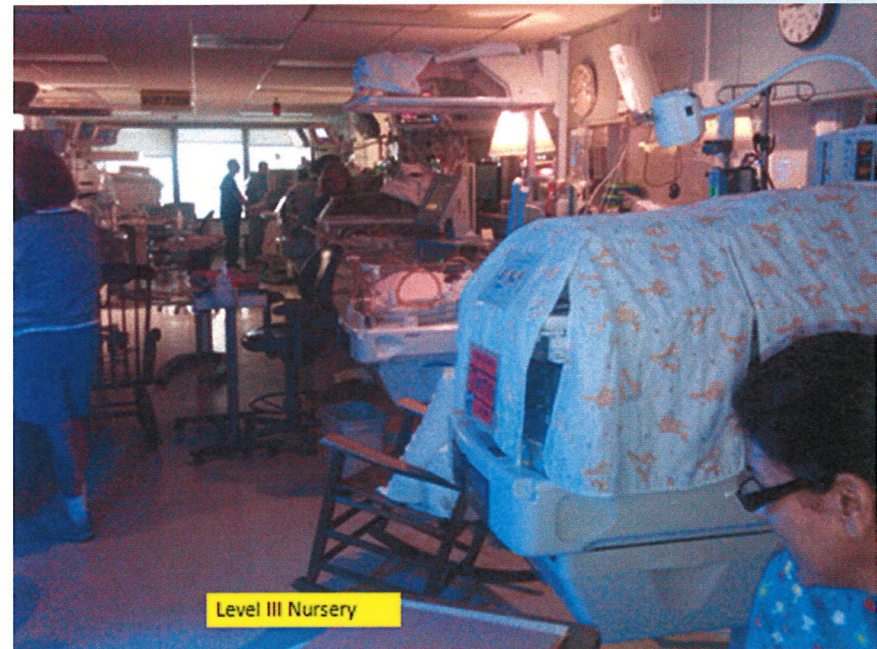
Changing What's Possible.

MUSC Children's Hospital

Our Challenge - A Shortage of Space



Changing What's Possible.



The Future

Knowns:

- Must continue to reduce the cost of delivering care
- Currently at capacity in many areas
- \$20M reduction in **Medicaid** funding effective July 1, 2011
- ACA impact (2014- 2020) for **Medicare** \$180M
- Sequestration impact of \$29M

Unknowns:

- Will Medicaid Disproportionate Share cuts be protected (68M)?
- Number of commercially insured who will opt for exchanges?
- How much will hospitals absorb of the “Doc Fix”?
- Medicaid expansion?? Estimated positive impact \$434M?